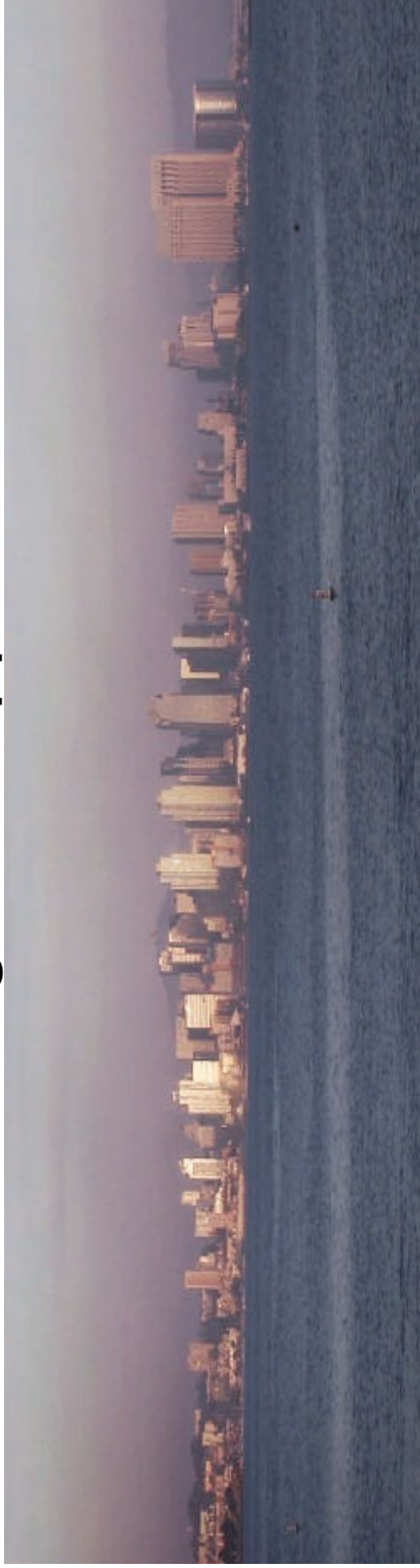


Climate Change and The San Diego Region: Challenges & Opportunities



Presented by Emily Young, PhD
Director of the San Diego Foundation's Environment Program



The San Diego Foundation's *Climate Initiative*

Work with government, business, and the community at large to advance regional efforts to curb greenhouse gas emissions (*mitigation*) and reduce our vulnerability to some of the most harmful effects of climate change (*adaptation*)

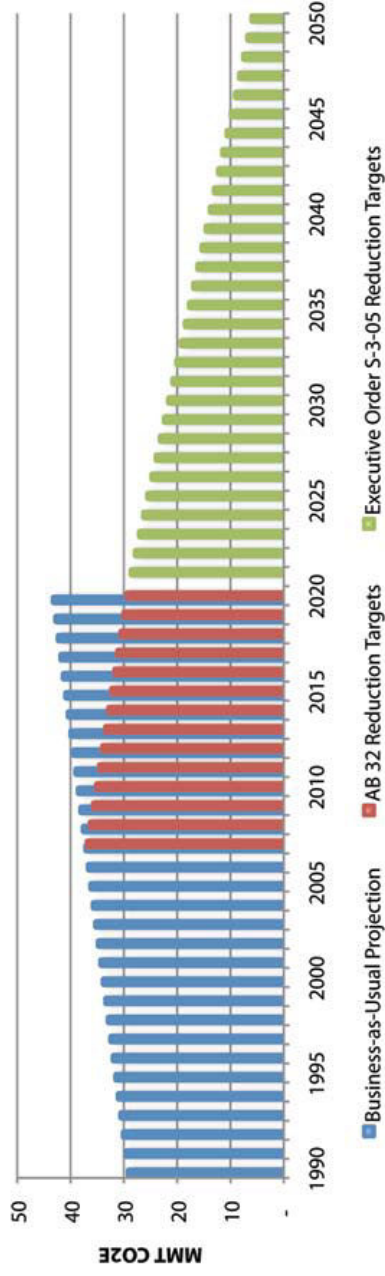


We must understand. Then we can act.

Our region's carbon footprint & reduction mandates



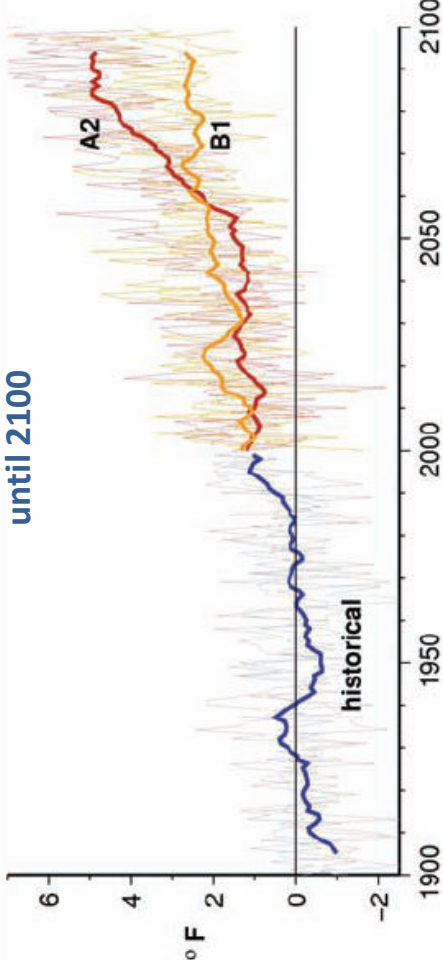
Figure 13. Theoretical GHG Reduction Targets for San Diego County



Source: www.sandiego.edu/epic/ghginventory

Our region's changing climate & adaptation needs

Projected Annual Temperatures for San Diego County until 2100



If current trends continue, by 2050...

San Diego's climate will be hotter & drier.

The sea level will be up to 18 inches higher.

We will face a severe water shortage.

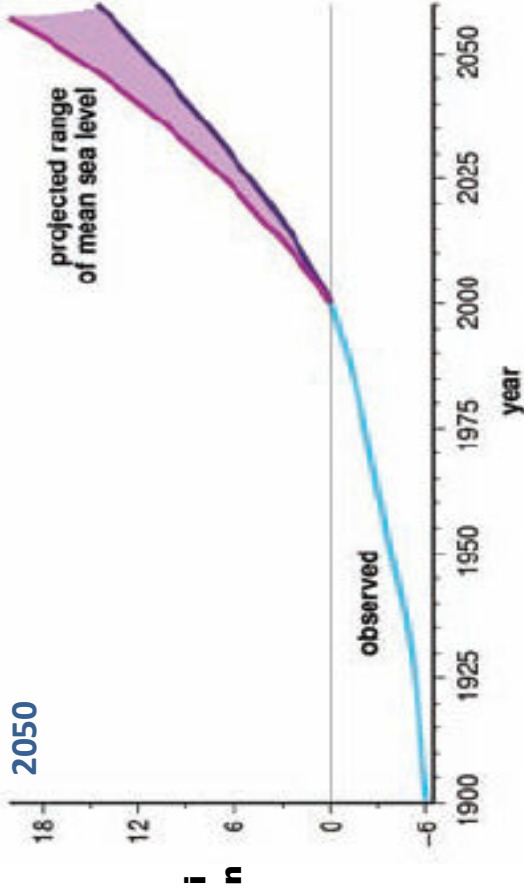
Wildfires will be more frequent and intense.

We will not be able to meet our energy needs.

Native plant & animal species will be lost.

Public health will be at risk, especially among the elderly & children.

Projected sea level rise for San Diego County until 2050



Growing Momentum of San Diego Climate Action

US Mayors/Climate Action Registry

- Carlsbad, Chula Vista, Coronado, Del Mar, El Cajon, Imperial Beach, La Mesa, San Diego, Solana Beach, Vista

Federal Leadership in Environmental, Energy & Economic Performance

- US Navy Region Southwest

Greenhouse Gas Inventories

- Carlsbad, Chula Vista, Encinitas, Imperial Beach, La Mesa, National City, Port of San Diego, Poway , San Diego, San Diego County, San Marcos, Solana Beach, Vista

Climate Action Plans/Strategies

- Chula Vista, San Diego, Port of San Diego*, SANDAG*, Solana Beach*, Vista* (*In development)

Urban Water Management Plan/Master Plan

- San Diego County Water Authority

SB375 Sustainable Communities Strategy

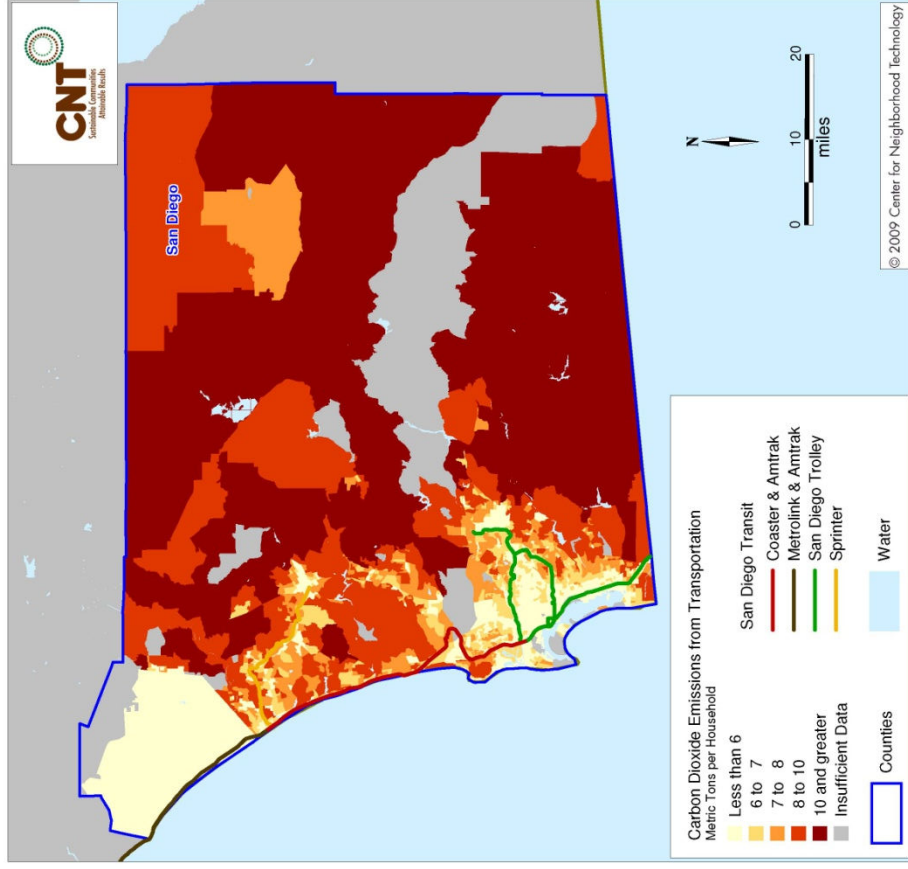
- SANDAG

2050
FOCUS

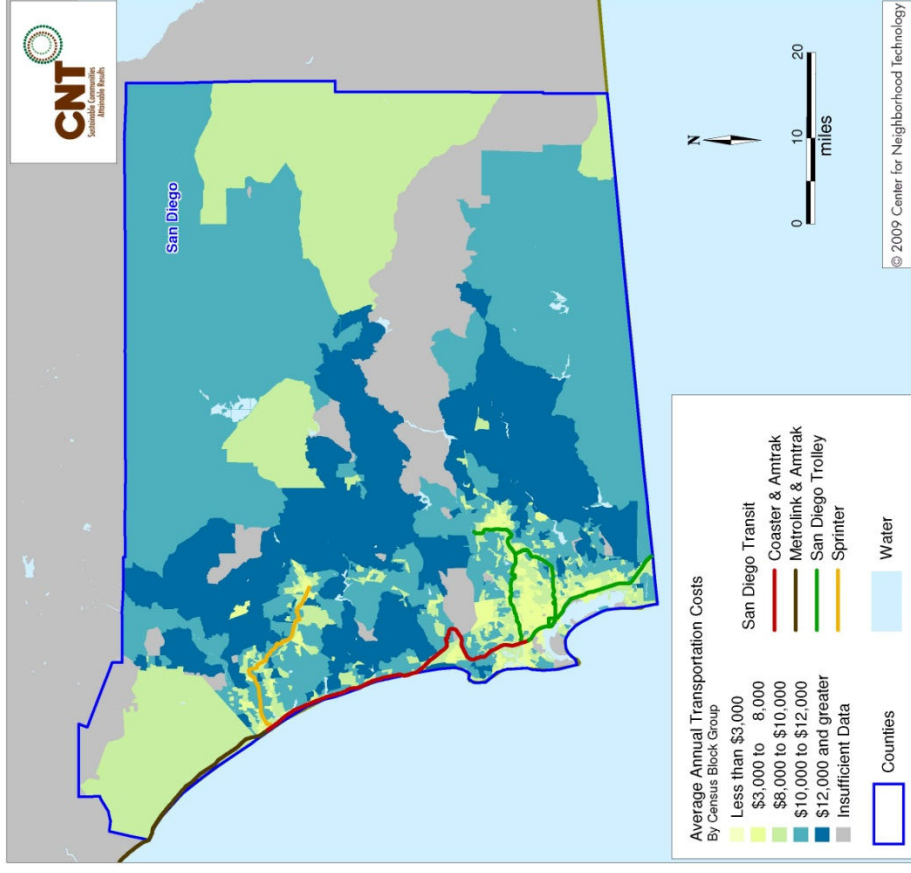
*Looking to the Future:
The Costs of Doing Nothing*

Local Costs of Current Transportation System

Emissions from Oil Consumption

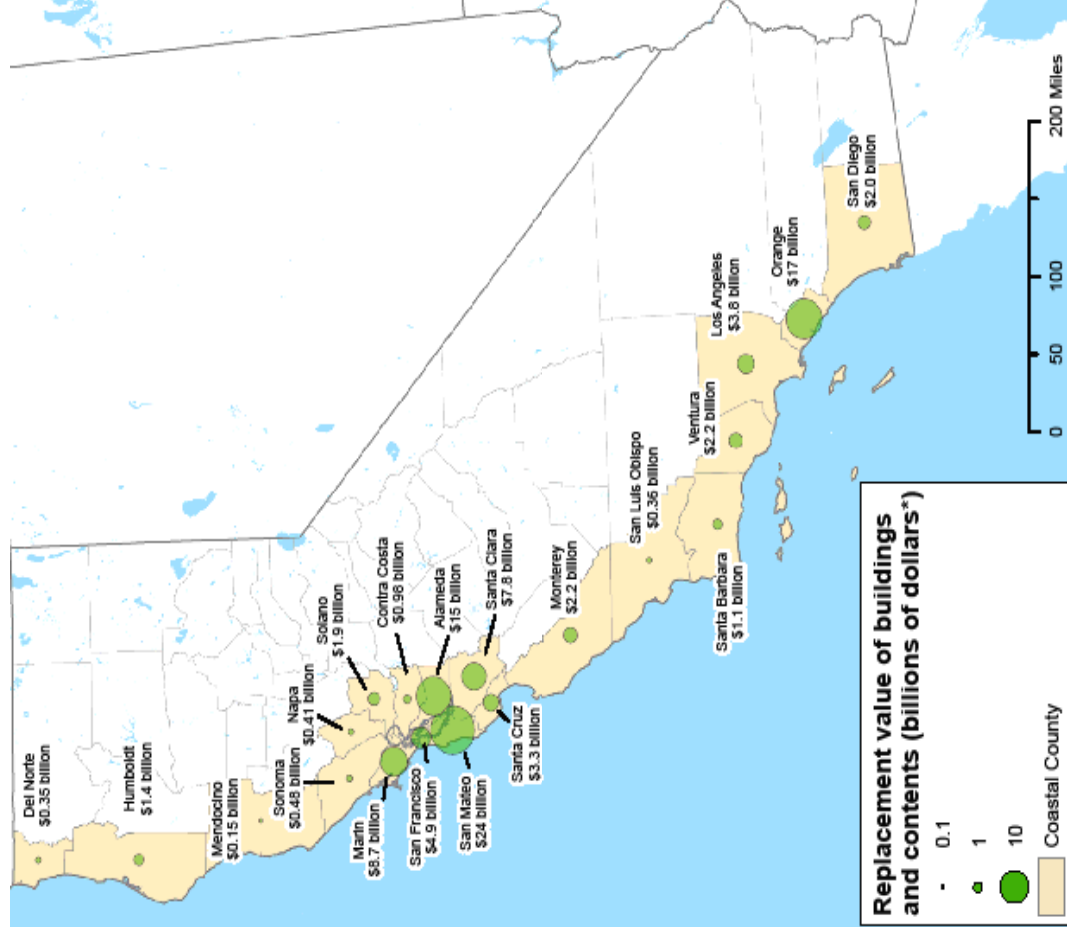


Costs of Oil-Intensive Transportation



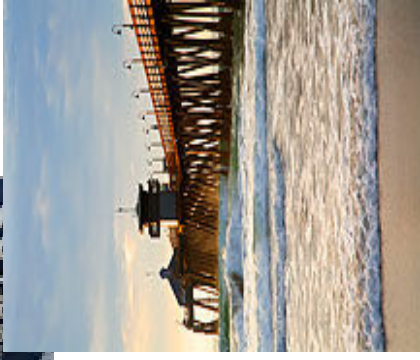
Local Costs of Infrastructure Risk from Sea Level Rise

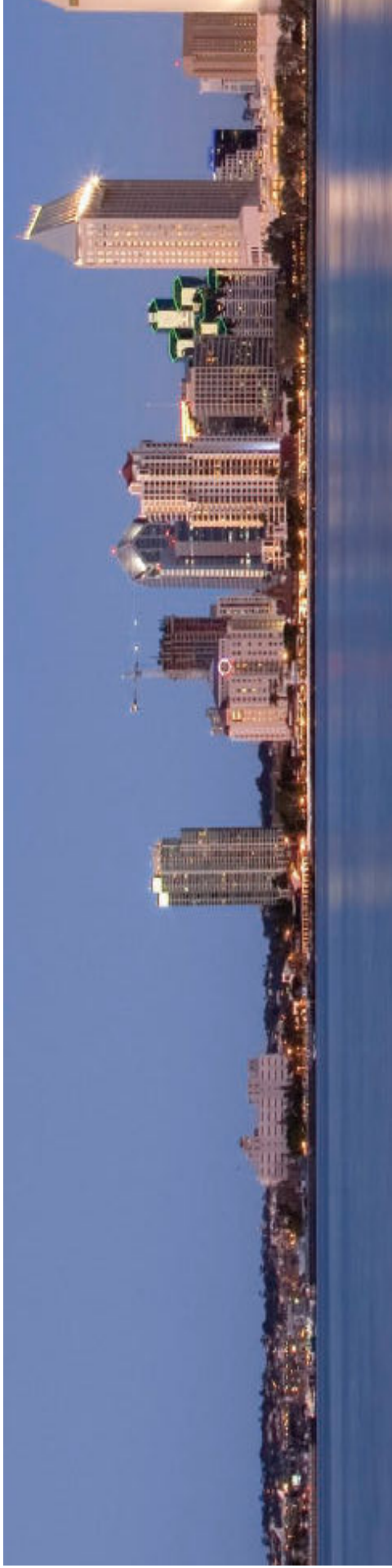
Replacement value of buildings and contents vulnerable to a 100 year coastal flood with 1.4 meters of sea level rise



Source: Pacific Institute, 2009
http://www.pacinst.org/reports/sea_level_rise/maps/

The Rewards of Acting Now





Understanding of the San Diego Region

The San Diego Foundation

We must understand. Then we can act.

Please visit www.sdfoundation.org for the full text of this report