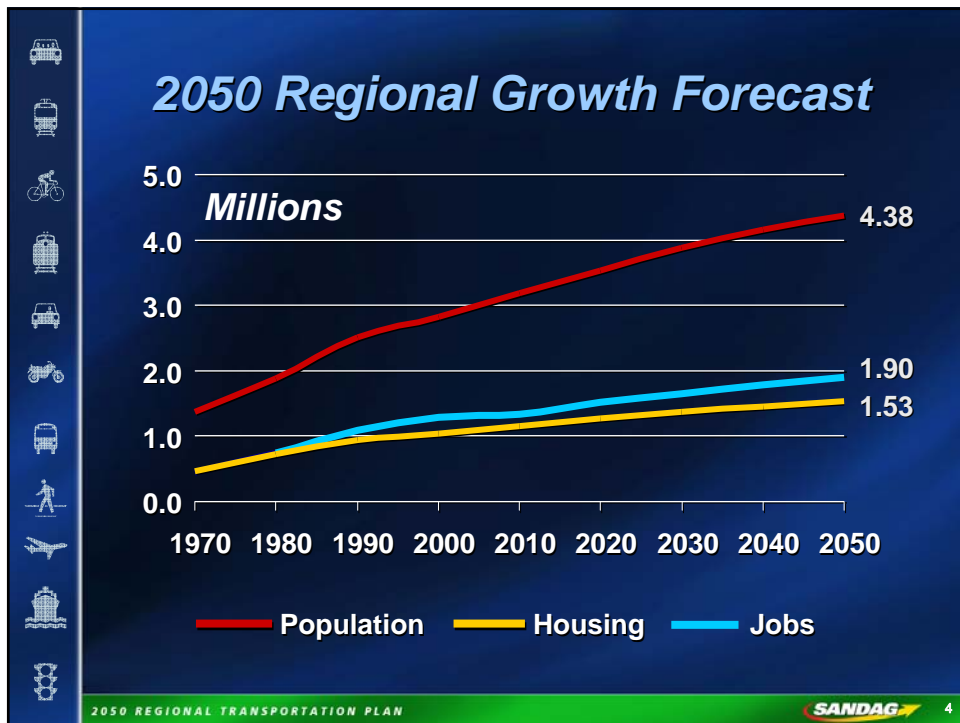
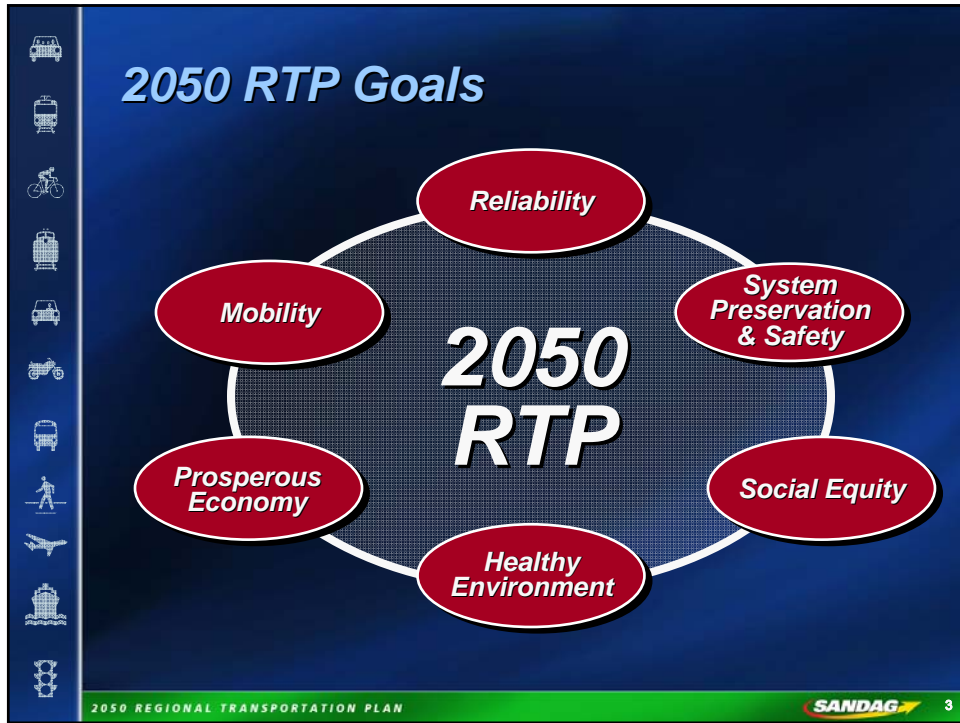


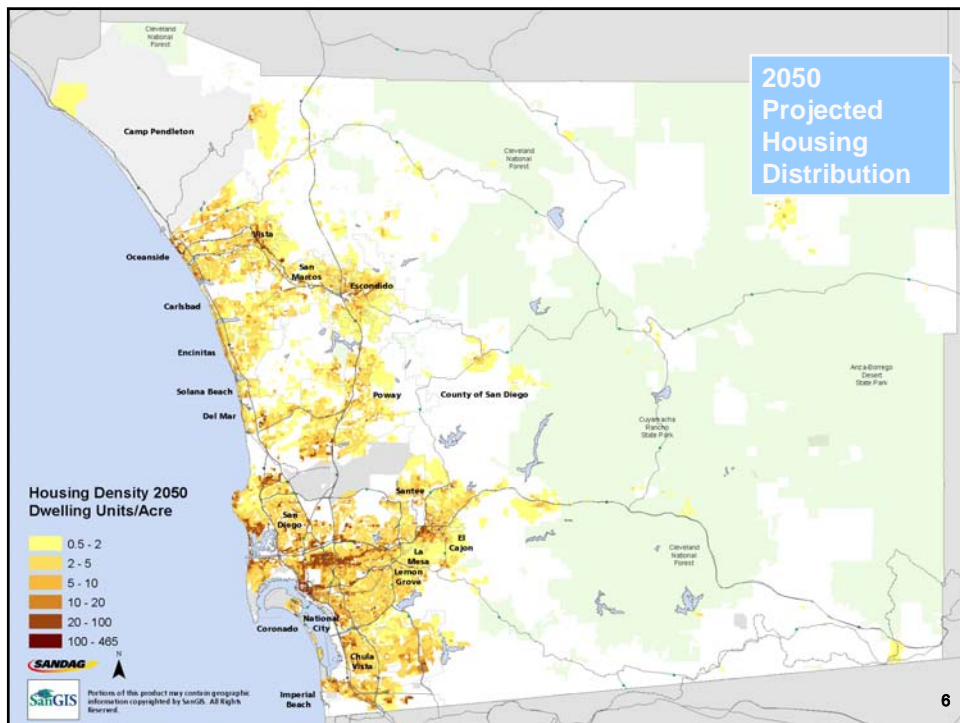
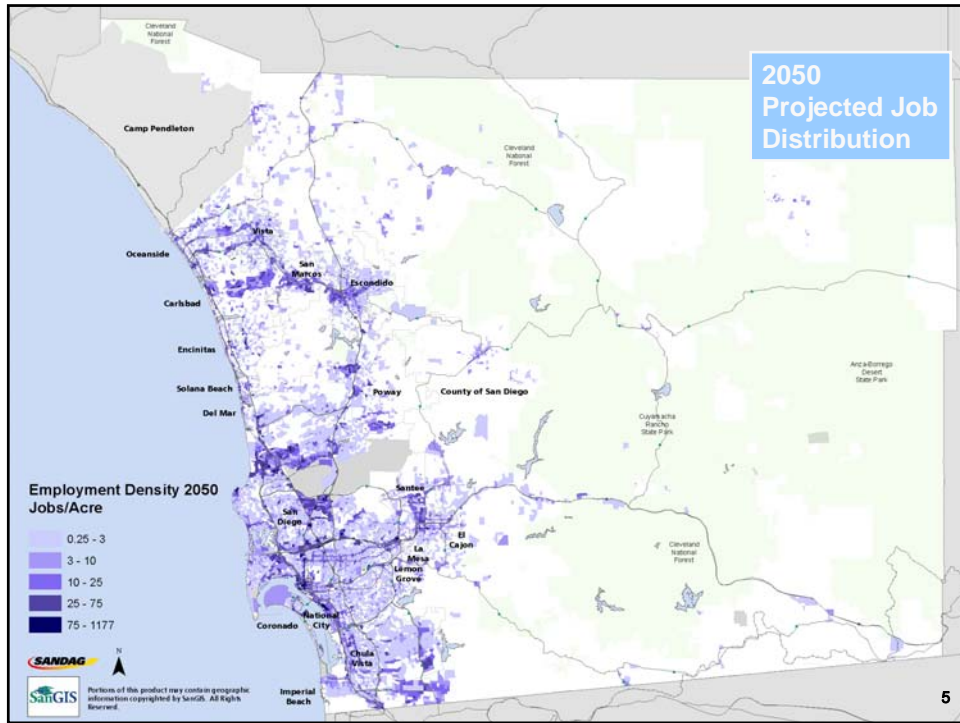


Setting The Stage...

- What is SANDAG?
- SANDAG Regional Transportation Plan
- 2050 RTP
 - New Sustainable Communities Strategy requirement

2050 REGIONAL TRANSPORTATION PLAN **SANDAG** 2







SB 375 Key Provisions

- Greenhouse Gas Targets
- Sustainable Communities Strategy
- Sensitive resource lands
- Regional Housing Needs Assessment
- Public involvement
- California Environmental Quality Act



SB 375 Target Setting

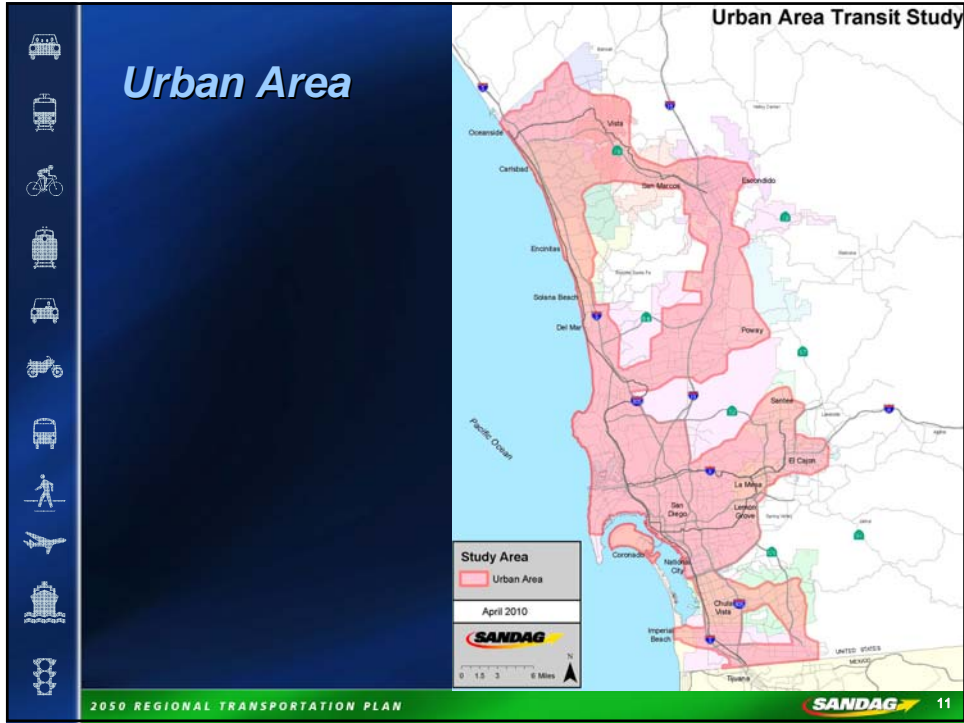
- Exchanging information with the state to develop a GHG target
- Draft GHG target in June 2010
- Final GHG target in September 2010

Sustainable Communities Strategy



Urban Area Transit Strategy





Initial Transit Concepts

Transit Propensity:
Expands Transit in the Most Urbanized Areas

Commuter Point-to-Point:
Emphasizes Quick Access to Work

Many Centers:
Connects Local Smart Growth Areas and Activity Centers

The diagram illustrates three transit concepts. The first, 'Transit Propensity', shows a grid of red lines with yellow dots at intersections, representing a dense network in urbanized areas. The second, 'Commuter Point-to-Point', shows a network of red lines connecting yellow circular nodes, representing direct routes to work. The third, 'Many Centers', shows a network of red lines connecting multiple yellow circular nodes, representing connections between local smart growth areas and activity centers.

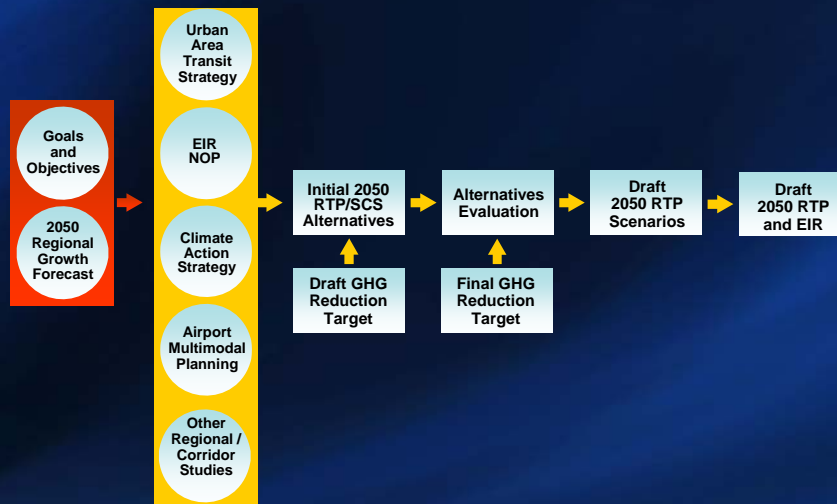
2050 REGIONAL TRANSPORTATION PLAN SANDAG 12

Incorporate Other Studies

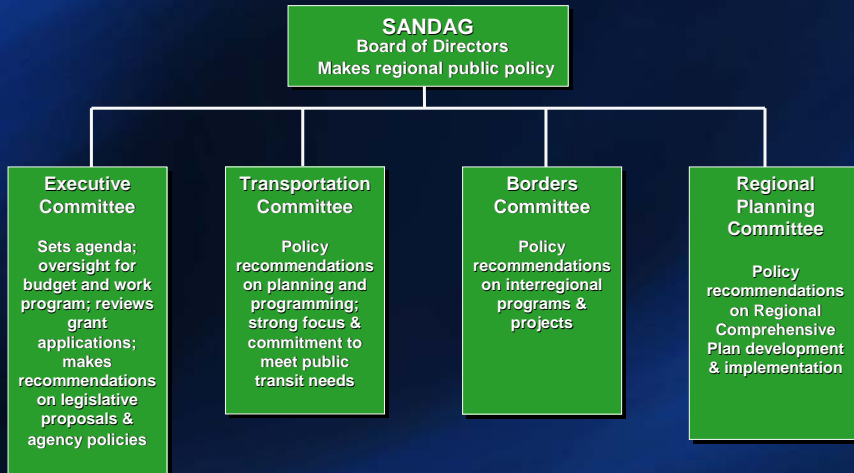


2050 RTP Development Process

Winter 2010 Spring 2010 Summer/Fall 2010 Fall 2010 Winter 2011



2050 RTP Oversight



Technical/Stakeholder Input





Next Steps

- Comments on the EIR Notice of Preparation
- Finalize the Unconstrained Transportation Network
- Rank all transportation projects
- Develop initial Revenue Constrained/SCS scenarios for evaluation



Questions?

Elisa Arias
SANDAG
ear@sandag.org
(619) 699-1936
www.sandag.org/2050rtp

