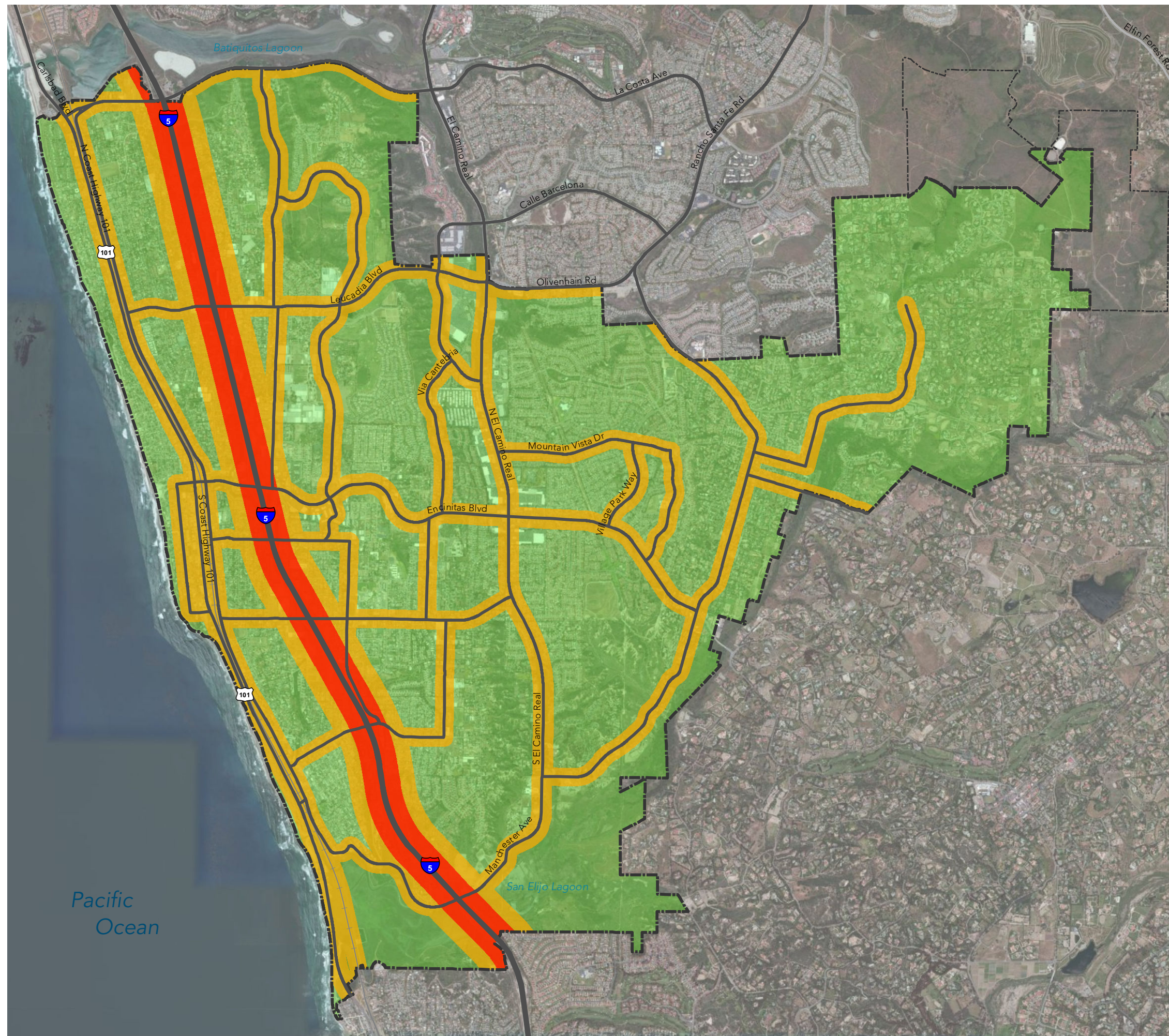
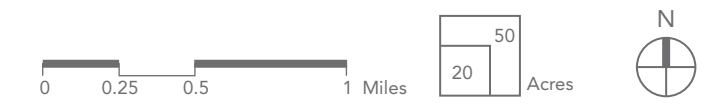


Figure N-4  
**Maximum Exterior Noise Level Requirements**



- City Limits
- Sphere of Influence
- Roads
- Railroad
- Circulation Element Roadways
- 70 CNEL Maximum
- 65 CNEL Maximum
- 60 CNEL Maximum



Source: City of Encinitas; MIG, Inc.  
 Date: March 2011